

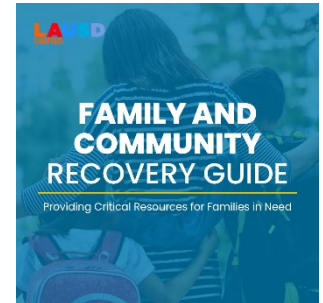


Community Advisory Committee Office of Student, Family and Community Engagement

Wednesday, January 22, 2025

Greetings, Community Advisory Committee Members,

In these challenging times, we come together in solidarity, keeping in mind the families and school communities affected by the recent fires and strong winds. As we move forward into the recovery phase, we kindly ask that you share the District's Family and Community Recovery Guide with your networks. The guide will be updated as new developments and information become available. It includes essential details on learning continuity and District resources, such as contact information for Region leadership and locations of wellness centers/clinics. Additionally, the guide provides information on various government and non-profit organizations that can assist families in need. To access and download the guide, please visit <https://www.lausd.org/schoolupdates> and select the "Resources" icon. This new year offers an opportunity to rely on our resilience and to help one another make the most of this new year.



- **LAUSD 2025: We Are One Campaign:** The Los Angeles Unified re-launched our *We Are One* campaign under a new name, as *LAUSD 2025: We Are One*. This effort seeks to ensure Los Angeles Unified is a leader in offering a brighter, more



inclusive environment for all students and families. The campaign will feature Know Your Rights workshops as webinar and school site experiences, as well as Rooted in Resiliency sessions for families and members of the community. To access the schedule of workshops, visit the Family Academy webpage at

<https://www.lausd.org/familyacademy>.

- **Region Family and Community Engagement** teams are partnering with *Families in Schools* to offer Title I parents the opportunity to learn more about the District's Title I Parent and Family Engagement Policy and provide input. Our final engagement to capture input will be on February 12, 2025 from 10:30 a.m.-12:00 p.m. More information will be found on the February webinar course catalogues available at <https://www.lausd.org/familyacademy>.



Community Advisory Committee Office of Student, Family and Community Engagement

Strategic Plan Pillar III: Engagement and Collaboration Highlights

The Parent Portal is available for all parents and guardians to learn more about the progress of their children in a variety of different areas. Over 85% of Los Angeles Unified families are already connected to student accounts! Learning about the different features of the Parent Portal allows parents to partner with their school communities to celebrate student achievement, ask focused questions and identify needed support. Call the Los Angeles Unified Hotline at 213-443-1300 for help getting connected or for assistance with using the features.

The School Volunteer Program is a resource available for families and the community to offer their time, skills and knowledge to support Los Angeles Unified students. This year, Los Angeles Unified had over 33,000 processed volunteers serving in District schools. For more information about the School Volunteer Program, visit <https://www.lausd.org/volunteer>.

Special Education Workshops: The Division of Special Education has various resources available for parents to take advantage of every opportunity as an active partner in their child's education. Workshops and training are offered covering various topics related to the needs of students with disabilities and the many ways parents can support their child both in and out of the classroom. In addition to workshops and training sessions, District- and community-sponsored events supporting of students and parents are available. For more information, visit <https://www.lausd.org/spedParents>.

The Family Academy: The Family Academy is comprised of webinar, in-person and hybrid sessions designed to leverage families' assets to be empowered as they support their child from the early primary years to college and career success. This effort complements families' knowledge by connecting them to actionable learning focused on their child's development, as well as opportunities to accelerate their own careers and quality of livelihood. The schedules for offerings online and in the Regions with webinar links and summary information is available at <https://www.lausd.org/familyacademy>, along with past recorded content.





Community Advisory Committee Office of Student, Family and Community Engagement

Region Ambassadors: The Los Angeles Unified Region Ambassadors will be valuable advocates and guides who inform their school communities about District services and resources. Each segment of learning is hosted in a hybrid format to meet the preference of diverse families so they can learn in person and online. If interested in learning more about supports for English Learners, students with special needs or the Local Control and Accountability Plan, which is the District's plan for use of its general funds, consider attending a Region Ambassador session. For more information and to connect to the sessions, visit <https://www.lausd.org/ambassadors>

Equity Course Pathways: The Family Academy, in partnership with the Division of Adult and Career Education, offers cohort-centered courses known as Equity Course Pathways. The curriculum is organized as a 7-class course experience where families engage in culturally relevant curriculum in a cohort learning environment, define family engagement, and develop their action plan to stay engaged in their child's education. Choose from one of four pathways: multilingual learners, Black and African American learners, youngest learners, and learners with exceptional needs. Click on the link to join the interest list and someone will contact you to enroll: LAUSDAdultEd.org/HelpYourChild

Additional Resources

Los Angeles Unified Student Wellness and Family Hotline: Please continue to direct parents and students to this service provided for families. Trained District personnel are available to help on all health-related topics and are accessible by dialing the following number: 213-241-3840.

Los Angeles Division of Special Education School and Family Support Services

Hotline: For more information on services to support students with special needs, call (213) 241-6701.

Region Leaders: Each child's school sits in a geographical Region in the Los Angeles Unified. To connect with District leaders in a specific Region or to learn more about the specific services offered in the Region, visit <https://www.lausd.org/regions>.



Community Advisory Committee
Office of Student, Family and Community Engagement

Board of Education Meetings: The Los Angeles Unified Board of Education hosts meetings in person and will continue to broadcast meetings online. Visit the following webpage to learn how to speak during public comment: <https://www.lausd.org/boe>.

Responsibilities Assigned to the CAC in the California Education Code, Section 56194

The Community Advisory Committee shall have the authority and fulfill the responsibilities that are defined for it in the Local Plan. The responsibilities shall include, but need not be limited to, all the following:

1. Advising the policy and administrative entity of the special education local plan area regarding the development, amendment, and review of the local plan. The entity shall review and consider comments from the community advisory committee.
2. Recommending annual priorities to be addressed by the plan.
3. Assisting in parent education and in recruiting parents and other volunteers who may contribute to the implementation of the plan.
4. Encouraging community involvement in the development and review of the local plan.
5. Supporting activities on behalf of individuals with exceptional needs.
6. Assisting in parent awareness of the importance of regular school attendance.
7. Supporting community involvement in the parent advisory committee established pursuant to Section 52063 to encourage the inclusion of parents of individuals with exceptional needs to the extent these pupils also fall within one or more of the definitions in Section 42238.01.